

4" AND 6" TWIN MANUAL DISC FILTERS

INSTALLATION, OPERATION & MAINTENANCE INSTRUCTIONS

FEATURES

- Reinforced plastic filter with 4" or 6" flange connections.
- Filter element consists of grooved discs, mounted on a spine, forming a cylindrical filter element.
- Clamp-on filter cover.
- Resistant to chemicals and liquid fertilizers.
- Available filtration grades: 040, 080, 120, 140 and 200.



TECHNICAL DATA - 4" TWIN

FLOW RANGE	160 - 450 GPM
MAXIMUM PRESSURE	140 psi
FILTERING SURFACE AREA	574 sq. in.
FILTERING VOLUME	216 cu. in.
LENGTH	47"
WIDTH	13"
WEIGHT	52.8 lbs.
DISTANCE BETWEEN ENDS	17 17/32"
INLET/OUTLET DIAMETER	4" Flanged
MAXIMUM TEMPERATURE	140° F
pH	2 - 13

TECHNICAL DATA - 6" TWIN

FLOW RANGE	200 - 600 GPM
MAXIMUM PRESSURE	140 psi
FILTERING SURFACE AREA	574 sq. in.
FILTERING VOLUME	216 cu. in.
LENGTH	47"
WIDTH	13"
WEIGHT	57.2 lbs.
DISTANCE BETWEEN ENDS	17 17/32"
INLET/OUTLET DIAMETER	6" Flanged
MAXIMUM TEMPERATURE	140° F
pH	2 - 13

MESH/MICRON

MESH	MICRON	DISC COLOR
040	400	Blue
080	200	Yellow
120	130	Red
140	115	Black
200	55	Green

INSTALLATION

1. Ensure correct inlet/outlet direction.
2. When connecting filter to pipe, do not overtighten.

MAINTENANCE AND CLEANING

DISMANTLING

1. Ensure system is turned off and no pressure remains in the pipeline or the filter
2. Release pressure through drainage ball valve.
3. Open clamp by pulling the safety pin out and lifting the clamp cover.
4. Remove filter cover from filter body with a slight counterclockwise rotation.
5. Remove the entire filter element.
6. Release the spine tightening nut and pull the cap's telescopic extension to decompress the discs.
7. Proceed with cleaning.

CLEANING

1. Flush discs with pressurized water.
2. If discs are not clean after flushing with water:
 - a. If the discs have an accumulation of algae in the grooves, soak the discs and spine in a small bucket of Clorox bleach for one hour and then reflush with fresh water.
 - b. If the discs have an accumulation of iron in the grooves, soak the discs and spine in a small bucket of 10% Muriatic Acid for one hour and then reflush with fresh water. Muriatic Acid can be purchased at any pool supply store.

MAINTENANCE AND CLEANING

ASSEMBLY

1. If previously removed, assemble rings on spine and turn tightening nut until the discs are tightly compressed.
2. Insert filter element and make sure it is seated correctly.
3. Replace filter cover on the body and secure it with a slight clockwise rotation.
4. Secure the clamp onto the cover and close using the lever and insert the safety pin.

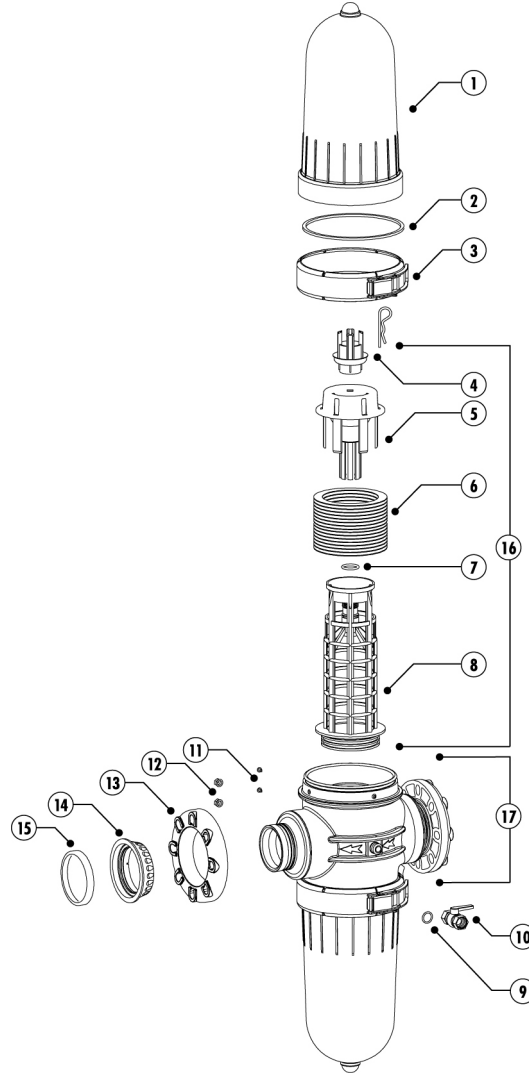
WINTERIZATION

Drain all the water from the filter to avoid cracking due to freezing.

PARTS BREAKDOWN - 4" AND 6" TWIN FILTERS

KEY	MODEL NUMBER	DESCRIPTION	MATERIALS
1	25AP25010601	FILTER COVER	PP
2	25AP534341	HYDRAULIC COVER SEAL	EPDM
3	25AP50420060	CLAMP	SS
4	25AP25060302	TIGHTENING NUT	R.PP
5	25AP25060304	SPINE CAP	R.PP
6	25AP2341-***	RING SET ONLY	PP
7	25AP50032220	O-RING	EPDM
8	25AP25020302	SPINE	R.PP
9	25AP50032311	O-RING	EPDM
10	25AP50540112	3/4" TAP (BALL VALVE)	BRASS
11	25AP50060004	GAUGE PORT SEAL	EPDM
12	25AP25110103	GAUGE PORT NUT	R.PP
13	25AP25100425	4" TWIN FLANGE	R.PA
	25AP25100625	6" TWIN FLANGE	R.A
14	25AP25070402	4" TWIN FLANGE CLAMP RING	POM
	25AP25070602	6" TWIN FLANGE CLAMP RING	POM
15	25AP50052014	4" TWIN GASKET	EPDM
	25AP50052016	6" TWIN GASKET	EPDM
16	25AP1341-***	SPINE ASSY WITH RING SET	-
	25AP21990043	SPINE ASSY NO RING SET	-
17	25AP22450001	4" TWIN BODY	-
	25AP22460001	6" TWIN BODY	-
-	25AP14411001	4" TWIN BODY WITH CLAMP	-

Substitute *** for proper mesh size.



MATERIALS KEY

CODE	MATERIAL
R.PP	REINFORCED POLYPROPYLENE
PP	POLYPROPYLENE
R.PA	REINFORCED POLYAMIDE
EPDM	ETH. PROPY. RUBBER
POM	ACETAL
SS	STAINLESS STEEL