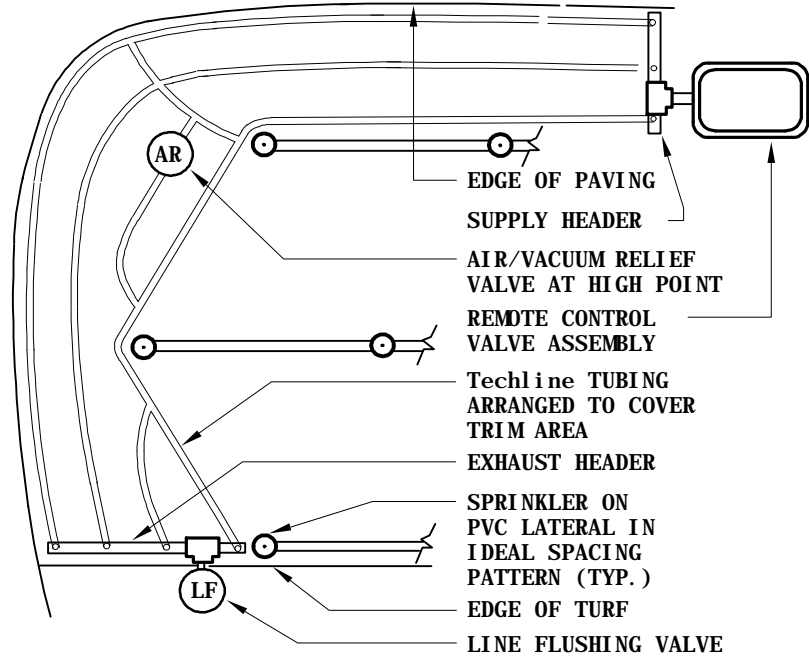


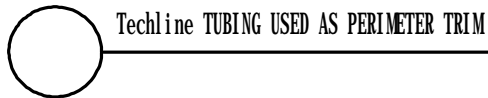
**Detail 1.09**



**NOTES TO DESIGNER**

- 1- IN THIS EXAMPLE, IDEAL SPACING IS MAINTAINED FOR THE SPRINKLER SYSTEM W/ OUT DISTORTION, WHILE THE HEADS ARE SET AWAY FROM THE PAVING EDGE TO AVOID OVERSPRAY
- 2- BLANK Techline TUBING IS USED TO JOIN THE LATERALS ACROSS THE HIGH SPOT TO ENHANCE THE FUNCTION OF THE AIR/VACUUM RELIEF VALVE.

PLAN - NO SCALE



DETAIL - NO SCALE

**“Techline Perimeter for Sprinklers” Layout**