



Flow Meters

for Gold Mines

Quality Performance, Long-Life and Reliable Flow Measuring Instruments



3" Flow Meter

Applications

- For mining and industrial applications.
- Reclamation projects.

Specifications

- Maximum working pressure:
3/4" to 1 1/2" - 145 psi, 2" to 12" - 230 psi
- Maximum water temperature:
3/4" to 1 1/2" - 120° F, 2" to 12" - 140° F
- Body material:
3/4" - Polypropylene
2" to 12" - Cast iron
- 1" to 12" meters are painted with baked, powder-coated epoxy for resistance to corrosive conditions
- Installation requirement:
2" to 12" - 10 x diameter before and x 5 after for maximum accuracy
3/4" to 1 1/2" - no straight pipe requirement

PART NUMBERS / ORDERING INFORMATION

Size	With Standard Register	With Rate of Flow Register
3/4"	36FMP0.75	-
1"	36M251T	36M251T-R
1 1/2"	36M401.5T	36M401.5T-R
2"	36WMR2T10	36WMR2T10-R
3"	36IRT3F	36IRT3F-R
3" PRECISION	36WT3F	36WT3F-R
4"	36IRT4F	36IRT4F-R
6"	36IRT6F	36IRT6F-R
8"	36IRT8F	36IRT8F-R
10"	36WT10F	36WT10F-R
12"	36WT12F	36WT12F-R



NETAFIM USA
5470 E. Home Ave. • Fresno, CA 93727
888.638.2346 • 559.453.6800
FAX 800.695.4753
www.netafimusa.com

Product Advantages

2" Flow Meter

- High accuracy down to 5 GPM.
- Threaded couplers for easy installation and removal.
- Can be installed in a vertical, horizontal or oblique position.

3", 4", 6" and 8" Flow Meters

- Measuring accuracy is $\pm 2\%$.
- Open water or solution passage resulting in very low headloss.
- High resistance to fine sand damage.
- Most economical price in the industry.
- Can be installed in a vertical, horizontal or oblique position.

3" Precision, 10" and 12" Flow Meters

- Highest quality and reliability available.
- Maximum protection from fine sand damage.
- Double magnetic drive register.
- Low wear, long-life impeller shaft and bearings.
- Can be installed in a vertical, horizontal or oblique position.
- Full diameter impeller.

Register Features

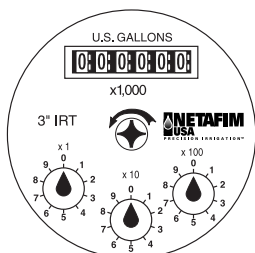
- Magnetic drive
- Hermetically sealed capsule
- Cartridge design for easy field replacement
- Output fitting for electronic sensor
- 6-Digit Totalizer
- 3-Flow Indicator dials
- Leak Detector



2" Flow Meter
with Pulsed Reed Switch



6" Flow Meter
with Pulsed Reed Switch



Standard Register



Optional Register
with Solar Powered
Digital Rate of Flow

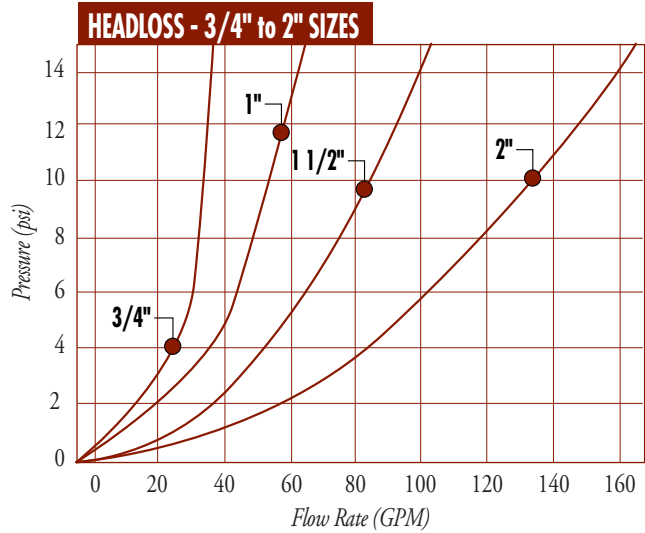
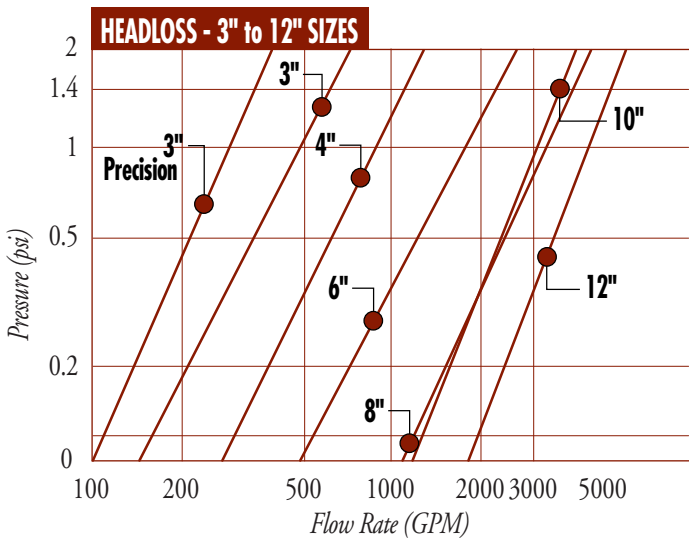
Flow Meter Technical Information

DIMENSIONS

Size	Length	Height	Width	Weight (lbs)	Inlet/Outlet Connections
3/4"	4.4	4"	3.2"	.6	Male Threaded
1"	10.2"	4.2"	4.1"	6	Male Threaded Coupling
1 1/2"	11.8"	6.6"	4.9"	15	Male Threaded Coupling
2"	7.9"	6.9"	2.5"	11	Male Threaded Coupling
3"	9.1"	9.4"	8.0"	40	Flange ANSI/AWWA
3" Precision	9.0"	9.2"	7.8"	34	Flange ANSI/AWWA
4"	9.8"	10.2"	8.8"	51	Flange ANSI/AWWA
6"	11.8"	12.2"	11.4"	73	Flange ANSI/AWWA
8"	13.8"	12.4"	13.6"	117	Flange ANSI/AWWA
10"	17.7"	17.2"	15.9"	165	Flange ANSI/AWWA
12"	19.6"	18.3"	18.1"	209	Flange ANSI/AWWA

TECHNICAL DATA

Size	Min. Flow ± 5%	Low Flow ± 2%	High Flow ± 2%	Max. Flow GPM	Gallons/Pulse
3/4"	0.2	0.9	11	22	0.1
1"	0.3	1.2	15	30	1
1 1/2"	0.9	3.5	45	85	1
2"	2	5	80	175	10
3"	20	45	400	660	10
3" Precision	4.4	6	330	480	10
4"	30	50	550	1100	10
6"	45	65	1100	2200	100
8"	80	130	2000	4400	100
10"	44	57	3300	6000	100
12"	50	175	4400	8800	100



Optional Flow Meters and Accessories

Chemical Flow Meter

- Plastic, 3/4" size - 0.1 gallons per pulse
- Totalizer for record keeping.
- Male threaded connection.
- Includes Pulse Reed Switch.
- Recommended for every fertilizer tank.
- Value priced.



PART NUMBER

36FMP0.75

3/4" Lateral Line Liquid Flow Tester

- Stainless Steel

PART NUMBER

MT36SST.75KIT

Netafim USA - Delivering Total System Solutions for Mining

- Dripperlines • Filters • Valves • Air Vents • Sprinklers • Flow Meters



For more information call Netafim USA
Customer Service at (888) 638-2346.