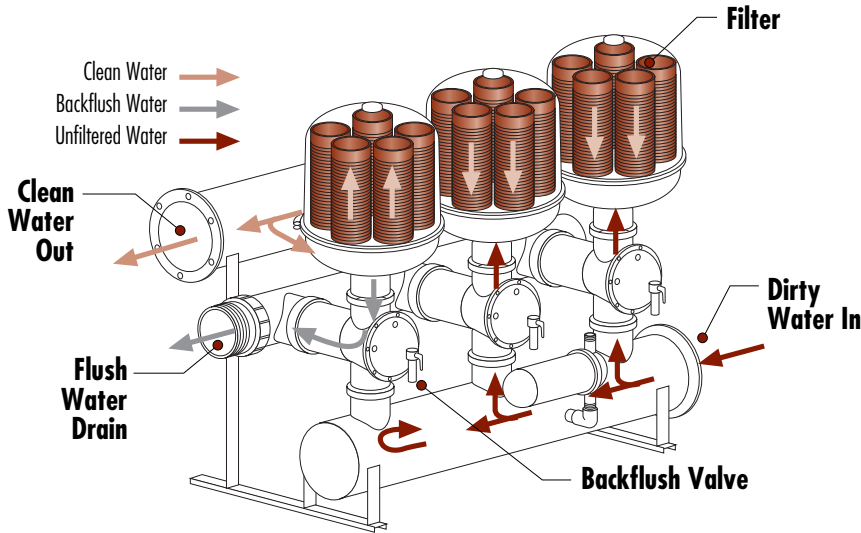




# Galaxy Disc-Kleen Filter Batteries

## High Flow Water Filtration System



**Filtration Process** – Inlet opens allowing a flow of water or solution from the inlet manifold into the filter, through the 5 elements of filtration, to the outlet manifold and out to the field.

**Backflush Process** – Inlet is closed. Drain port opens allowing clean water or solution to flow from the outlet manifold in the opposite direction into the filter. The discs are cleaned, particles are flushed out from the filter through the drain manifold.

When the filters are loaded (with particles) the difference of pressure between the inlet and the outlet of the Galaxy rises. A differential pressure gauge detects the critical difference of pressure pre-programmed transmitting a signal to the control unit which begins the backflush process of the filters in the battery one after the other.

Only one filter at a time is cleaned, while the remaining filters in the Galaxy system continue to supply clean water or solution to the downstream for the backflush process.

### Product Advantages

- Stainless steel pods are electrochemically polished for corrosion resistance.
- Automatic, self-cleaning, self-flushing system triggered by pressure differential and/or pre-set time.
- Equipped with new spine for maximum performance and low maintenance.
- Flexible installation - manifolds open on both ends.
- Short backflush cycle – saves backflush water or solution.
- Flushing cycle has a regulated volume, short and environmentally friendly, minimizing the use of flushed water or solution.
- Innovative design captures and stores large amounts of solids – reducing the need for backflushing.

### STANDARD SIZES AVAILABLE

No. of Units	3	4	5	6
Max. Flow	1300	1700	2200	2600

Larger sizes available through special order only.

### DISC COLOR

Color	Blue	Yellow	Red	Black
Mesh	40	80	120	140



**Stainless Steel Pods and Polypropylene Manifolds**

### Applications

- For systems requiring high volumes of solutions.
- Reclamation projects.

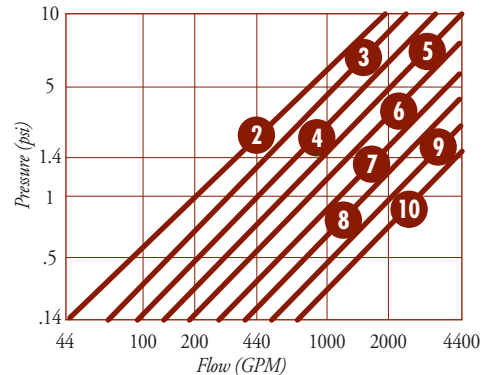
### Specifications

Maximum operating pressure: 140 psi  
 Minimum operating pressure for backflushing: 40 psi  
 Backflush flow rate per unit @ 40 psi: 175 GPM  
 Maximum operating temperature: 158°  
 Includes drain manifold

### Materials

Manifold: Polypropylene  
 Filter Body and Cover: 55316 Stainless Steel  
 Backflush Valve: Plastic with Reinforced Polyamide

### GALAXY DISC-KLEEN FILTERS Headloss



**NETAFIM USA**  
 5470 E. Home Ave. • Fresno, CA 93727  
 888.638.2346 • 559.453.6800  
 FAX 800.695.4753  
[www.netafimusa.com](http://www.netafimusa.com)

# Galaxy Disc-Kleen Filter Batteries Technical Information

## MAXIMUM RECOMMENDED FLOW RATES (GPM)

Water Quality	120 mesh							
	3 Units	4 Units	5 Units	6 Units	7 Units*	8 Units*	9 Units*	10 Units*
Good	1485	1980	2475	2970	3465	3960	4455	4950
Average	1245	1672	2090	2508	2926	3344	3735	4150
Poor	884	1179	1474	1769	2064	2358	2655	2950
Very Poor	541	722	902	1082	1263	1443	1623	1804

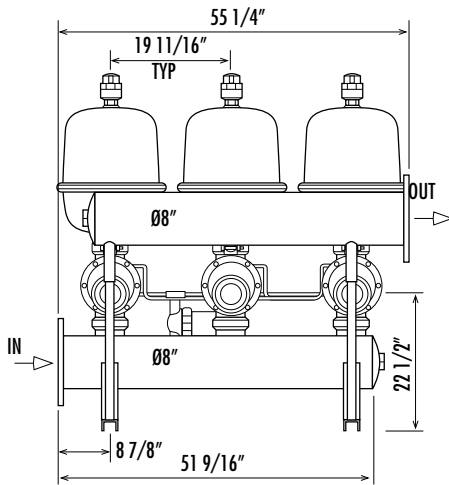
Water Quality	140 mesh							
	3 Units	4 Units	5 Units	6 Units	7 Units*	8 Units*	9 Units*	10 Units*
Good	1320	1760	2200	2640	3080	3520	3960	4400
Average	990	1320	1650	1980	2310	2640	2970	3300
Poor	660	880	1100	1320	1540	1760	1980	2200
Very Poor	436	581	726	871	1016	1162	1308	1454

\*Larger sizes available by special order only.

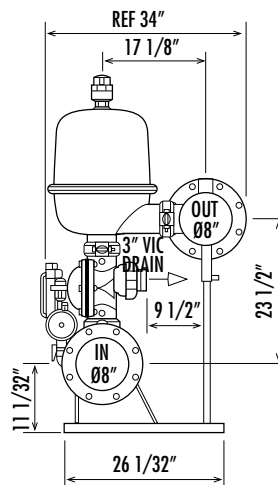
## RECOMMENDED SET-UP

Flushing Time	15-20 Seconds
Dwell	10 Seconds
Between Flushing	4 Hours
ΔP	7 psi

### 3 Unit Front View



### Side View



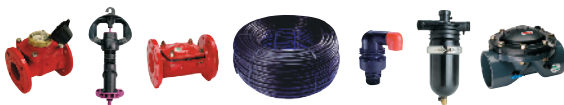
## DIMENSIONS & WEIGHT

Model	Part Number	Length	Width	Height
3 Units	26MSKSLPP3-XXX	55 1/4"	34"	58"
4 Units	26MSKSLPP4-XXX	76"	34"	58"
5 Units	26MSKSLPP5-XXX	95"	34"	58"
6 Units	26MSKSLPP6-XXX	73 1/2"	59"	58"

Substitute XXX for proper mesh size.

**Netafim USA - Delivering Total System Solutions for Mining**

- Dripperlines • Filters • Valves • Air Vents • Sprinklers • Flow Meters



For more information call Netafim USA  
Customer Service at (888) 638-2346.