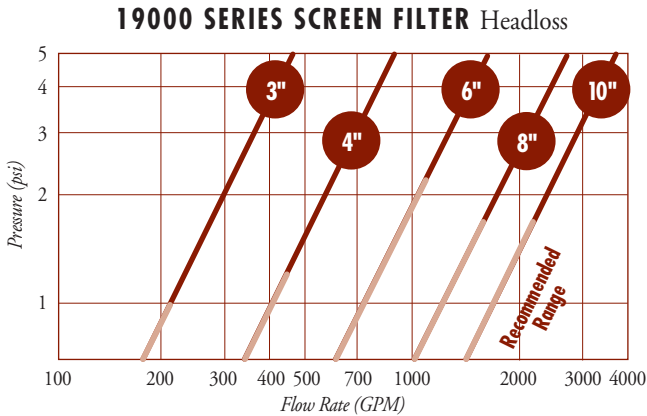




# 19000 Series Screen Filters

for Gold and Copper Mines

## Manual Filter with Stainless Steel Screen



\*Based on an 080 mesh screen in a clean state.

### Product Advantages

- Grooved connections allow for easy installation.
- Designed with angle configuration to eliminate the use of extra fittings.
- Screen made of durable stainless steel wire mesh (supported by a PVC perforated element).
- Ball valve (installed in the cover plate) allows for manual flushing of the filter.
- Cover is easily removed for servicing and cleaning.

### Installation Guidelines

- Grooved connections require a grooved adapter and coupling for connection to the mainline.
- Arrows on the filter indicate the direction of the water flow through the filter.
- As a back-up with a media battery, the filter connects directly to the grooved outlet manifold of each filter.

### Available Sizes

- 3" can be used for 16" media filter batteries.
- 4" can be used for media filter batteries 20" and 24".
- 6" for use with a 3 unit media filter battery or for sand separators.
- 8" for use with a 4 unit filter battery or sand separator model 24".
- 10" for use as primary filtration for water or solutions.

**Important Note:** For servicing, always allow space equal to the entire length of the filter to remove the screen from the filter.



3", 4" 19000 Series Screen Filter



6" & 8" 19000 Series Screen Filter



19000 Series Stainless Steel Screen Filter

### Applications

- Primary filtration for solutions.
- Back-up filter:
  - media filter batteries
  - sand separators
  - secondary filters next to each zone
- Reclamation projects.

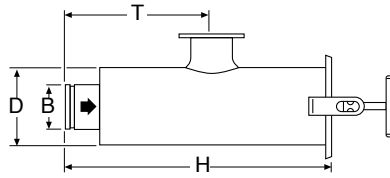
### Specifications

Screen Mesh Sizes: 080, 120, 150 and 200  
 Epoxy Filter Sizes: 3", 4", 6", 8"  
 Stainless Steel Filter Sizes: 3", 4", 6", 8", 10"  
 Material: Durable Epoxy Coating or  
 Stainless Steel

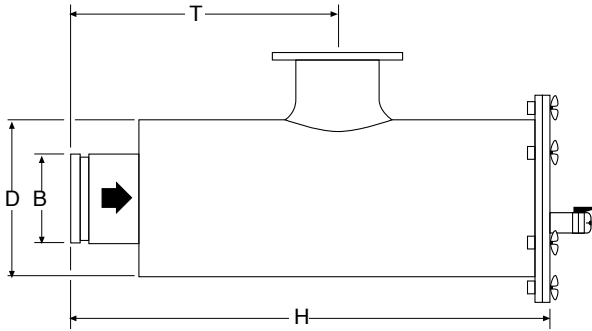


**NETAFIM USA**  
 5470 E. Home Ave. • Fresno, CA 93727  
 888.638.2346 • 559.453.6800  
 FAX 800.695.4753  
[www.netafimusa.com](http://www.netafimusa.com)

# 19000 Series Screen Filters Technical Information



3" or 4"



6", 8" or 10"

## MAXIMUM FLOW AND FILTRATION AREA

Size	Screen Area (sq. in.)	Maximum Flow (GPM)
3"	280	250
4"	280	400
6"	620	700
8"	950	1200
10"	1235	1800

## MESH/MICRON SIZING

Mesh	Inches	Micron
4	0.2030	5200
8	0.0970	2500
10	0.0750	1900
20	0.0331	840
25	0.0280	710
30	0.0232	590
40	0.0165	420
50	0.0117	300
60	0.0098	250
70	0.0083	210
80	0.0079	180
100	0.0059	150
120	0.0049	130
140	0.0041	100
170	0.0035	88
200	0.0029	75
270	0.0021	50
325	0.0017	44
550	0.0009	25
800	0.0006	15
1250	0.0004	10

## ORDERING INFORMATION

Size	Epoxy Coated	Stainless Steel
3"	23SF19903-XXX	23SL19803-XXX
4"	23SF19904-XXX	23SL19804-XXX
6"	23SF19806-XXX	23SL19806-XXX
8"	23SF19808-XXX	23SL19808-XXX
10"	N/A	23SL19810-XXX

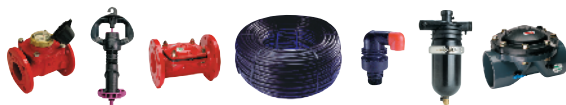
Substitute XXX with 080, 120, 150 or 200 mesh.

## DIMENSIONS & WEIGHT

Size	B	D	H	T	Weight
3"	3"	8"	26.75"	12.25"	57 lbs
4"	4"	8"	26.75"	12.25"	59 lbs
6"	6"	10"	33.00"	17.75"	117 lbs
8"	8"	10"	41.00"	22.50"	185 lbs
10"	10"	14"	45.25"	24.00"	238 lbs

**Netafim USA - Delivering Total System Solutions for Mining**

• Dripperlines • Filters • Valves • Air Vents • Sprinklers • Flow Meters



For more information call Netafim USA  
Customer Service at (888) 638-2346.