

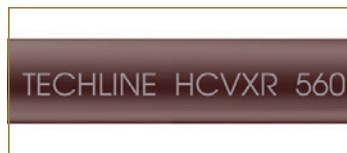
TECHLINE® HCVXR

THE INDUSTRY'S BEST PROTECTION AGAINST ROOT INTRUSION

Techline HCVXR is a revolutionary new dripline which provides superior root intrusion resistance. It's also the longest lasting solution that continues to function even after years of use because Cupron® copper oxide is infused in the material used to make the emitter. In addition to the copper oxide, Techline HCVXR includes a unique patented emitter design with physical root barrier for even more root intrusion protection.

Here are a few reasons why Techline HCVXR is the only choice for reliable, consistent dripline operation as well as maximum root intrusion protection.

- LONG LASTING PROTECTION THROUGHOUT THE LIFE OF THE DRIPLINE**
 Cupron® copper oxide will not wash off or wear off and does not leach out of the emitter providing superior root intrusion resistance.
- HIGH CHECK VALVE IN EACH EMITTER**
 The high check valve is great on slopes because it holds back 8.5' of water (elevation change) keeping the dripline charged for even distribution of water with no low emitter drainage.
- ANTI-SIPHON FEATURE PROTECTS AGAINST DEBRIS**
 Emitter outlet is sealed at system shut-down blocking debris from entering. Surface and subsurface installations don't require air relief valves.
- NEW COLOR FOR EASY IDENTIFICATION**
 The dripline has a new color for easy identification as Techline HCVXR.
- FOUR NEW EMITTER FLOW RATES**
 Achieve maximum design flexibility with four new emitter flow rates - the most options offered in the industry.
- LASER ETCHING ON THE DRIPLINE**
 Permanent identification of the model, flow rate and emitter spacing right on the dripline for quick and easy reference.



RELIABILITY WITH THE LANDSCAPE INDUSTRY'S LONGEST ROOT INTRUSION WARRANTY

15 YEARS

Netafim stands behind Techline HCVXR with an unprecedented limited warranty for root intrusion. We warrant Techline HCVXR to be free of emitter plugging due to root intrusion for a period of 15 years* from the date of original delivery.

* Refer to the Landscape & Turf Catalog for warranty details

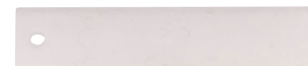


HERE'S HOW IT WORKS

Cupron® copper oxide (Cu_2O) technology effectively deters roots from growing in the HCVXR emitter. During the manufacturing process, the copper oxide is mixed with the emitter resin material embedding the copper oxide in the emitter. It will not wash off, wear off or leach out of the emitter. The copper colored top portion of the emitter contains the embedded copper oxide.



Top with embedded copper oxide



Diaphragm



Bottom with large filtration area