

NETAFIM ICU - INTERNET CELLULAR MODEM

- Real Port Installation
- ICU Connections

NETAFIM ICU CELLULAR MODEM

The Netafim ICU Cellular Modem
Model Number 00107-004960 includes:

- Cellular Modem
- Two Indoor Antennas
- Power Supply
- CD with Instructions and PC software



Important:

The ICU Modem is ready to use.

It is pre-configured by Netafim USA and includes a Verizon Cellular Data Plan with Static IP Address.

The account will to be transferred to the customer within 30 days of plan activation.

For additional information contact your Netafim USA Dealer.

NETAFIM ICU CELLULAR MODEM

Additional Items - Order Separately:

- External antenna for Cellular Modem
Model Number 00107-004970



- 6 ft. Cable with 9DB female 9 pin plug for NMC
Controllers - direct communication
Model Number 00107-011205



- NMC Pro Communication Radio Card RS232
Model Number 74340-009110



- NMC Junior Communication RS232 Card
Model Number 74340-006600



REAL PORT SOFTWARE INSTALLATION

The Real Port is a PC software that creates a Virtual Com Port on your PC.

The IP Address of the ICU will be assigned to this Virtual Com Port.

The Cellular Modem connected to your NMC Controller will select one of the Com Port numbers not in use and this will be the Virtual Com Port.

The Virtual Com will be selected on the NMC Net PC software for communication with your remote controller.

Note: To communicate with your remote NMC Controller, the PC needs to have Internet service.

REAL PORT SOFTWARE INSTALLATION

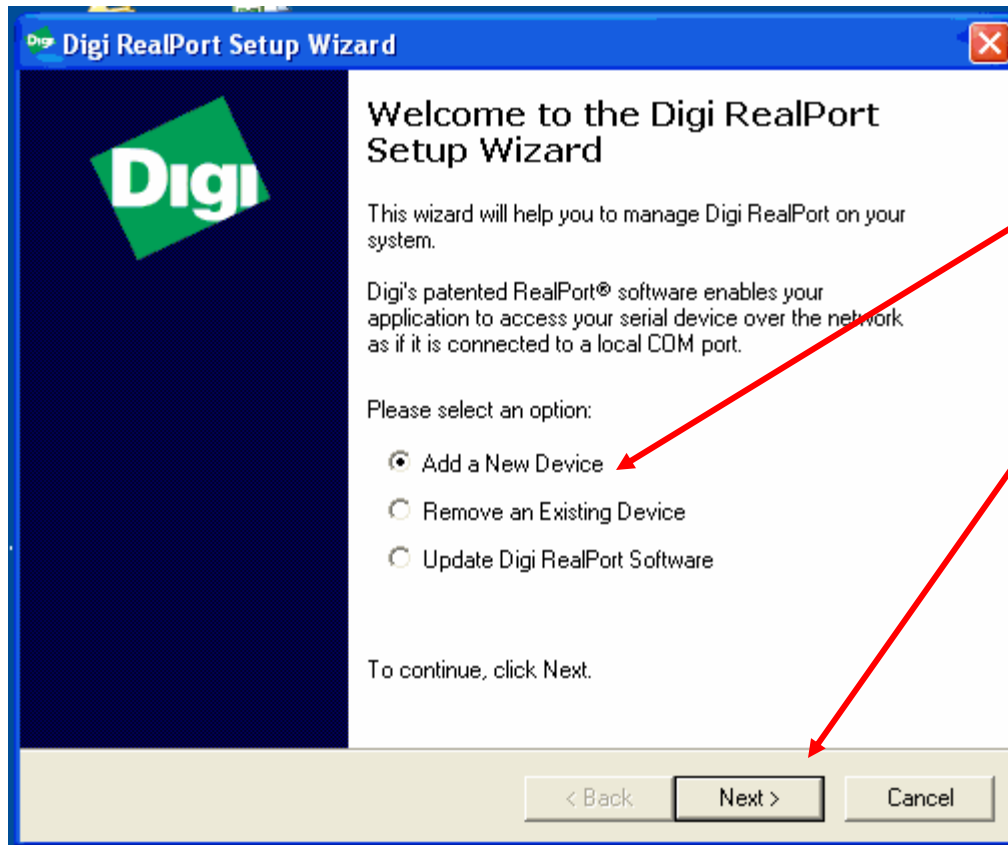
1. Insert the Netafim CD and open the Real Port File
2. If your PC has 32 Bytes run the Setup32.exe file and if your PC has 64 Bytes run the Setup64.exe file

Name	Date modified	Type	Size
dgrpencx.exe	3/1/2010 10:12 AM	Application	1,002 KB
DgRpHelp.chm	3/1/2010 10:11 AM	Compiled HTML ...	68 KB
dgrpui45.dll	3/1/2010 10:12 AM	Application extens...	862 KB
dgrpui4564.dll	3/1/2010 10:12 AM	Application extens...	1,621 KB
digirlpt.cat	3/31/2010 8:45 PM	Security Catalog	11 KB
digirlpt.sys	3/1/2010 10:12 AM	System file	150 KB
digirlpt64.sys	3/1/2010 10:12 AM	System file	171 KB
digirp.inf	3/1/2010 10:09 AM	Setup Information	6 KB
digirprt.inf	3/1/2010 10:09 AM	Setup Information	5 KB
mdmdgiam.inf	3/1/2010 10:09 AM	Setup Information	16 KB
Readme.txt	4/1/2010 10:21 AM	Text Document	20 KB
Setup.com	3/31/2010 9:39 PM	MS-DOS Applicati...	146 KB
Setup.exe	3/31/2010 9:39 PM	Application	146 KB
Setup32.exe	3/31/2010 9:39 PM	Application	774 KB
Setup64.exe	3/31/2010 9:39 PM	Application	1,150 KB

32 Bytes →

→ 64 Bytes

REAL PORT SOFTWARE INSTALLATION



On Set-up Screen select
“Add a New Device”

Click “Next”

COMPUTER PORT SET-UP

Describe the Device
Enter information for the device you would like to use.

Device Model Name:
Connect WAN VPN GPRS

Network Settings
 IP MAC DNS TCP-L
166 . 130 . 39 . 22
Default Network Profile:
TCP: Typical Settings
RealPort TCP: 771 Serial UDP: 2101
 Wait for COM open request

COM Port Settings
No. Ports: 1
Starting COM: Com 2
 Skip Modem PnP

Device Features
 Encryption
 Authentication

Install Options...
Help

< Back Finish Cancel

Select "IP"

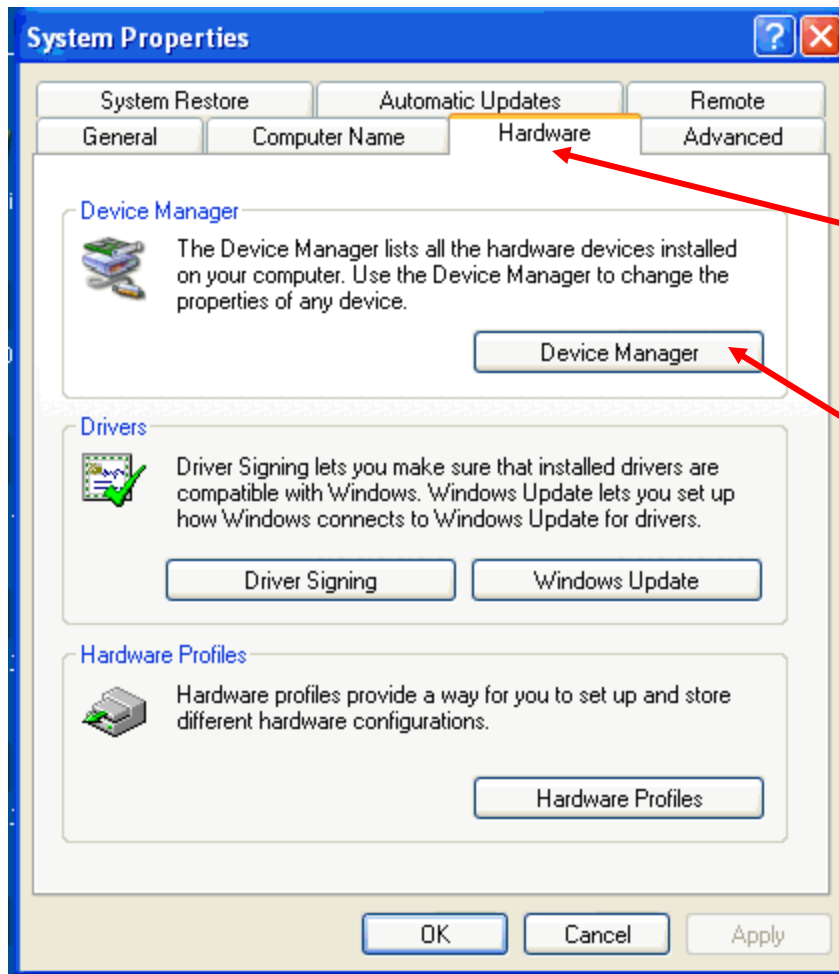
Type in Static IP that is on the ICU modem white label

Select a Comm Port that is not in use (this port will show up in NMC Net)

All other information on this screen is allocated by default and should not need any input

Click "Finish"

CHECKING COM PORT PC ALLOCATION



This step is only used to verify that the Real Port is set up correctly. Skip this or use to troubleshoot.

On the PC find the “Device Manager” and Click the Hardware Tab

Click the “Device Manager”

CHECKING COM PORT PC ALLOCATION

Open Device Manager on the PC

This step is only used to verify that the Com Port is set up correctly. Skip this or use to troubleshoot.

Expand "Multi-port Serial Adapters"
Right Click on "Standard Real Port" Select "Properties"

Click on "Advanced"

Connections will show the Real Port status.
"Connected" means that the Real Port is communicating with the Netafim ICU Cellular Modem.

Property	Value
Device type	Multi-port serial adapters
Manufacturer	Digi International
Location	Unknown
Device status	This device is working properly.
Model Name	Standard RealPort Device
No. of Ports	1
IP Address	166.159.185.247
TCP Port	7771
Connection	Connected
Device UI	http://166.159.185.247
Security	Authentication Off / Encryption Off

NETAFIM ICU CELLULAR MODEM

Connections between the ICU Cellular Modem and the NMC Controllers

ICU Modem

1. Connect the antennas to the modem. When the external antenna is required, it needs to be connected on the Primary Cellular.
2. Connect the Netafim Direct Plug to the modem
3. Connect the power supply to the modem and twist $\frac{1}{4}$ turn clockwise. The green LED power will light.
4. After a few seconds the signal strength LED will light

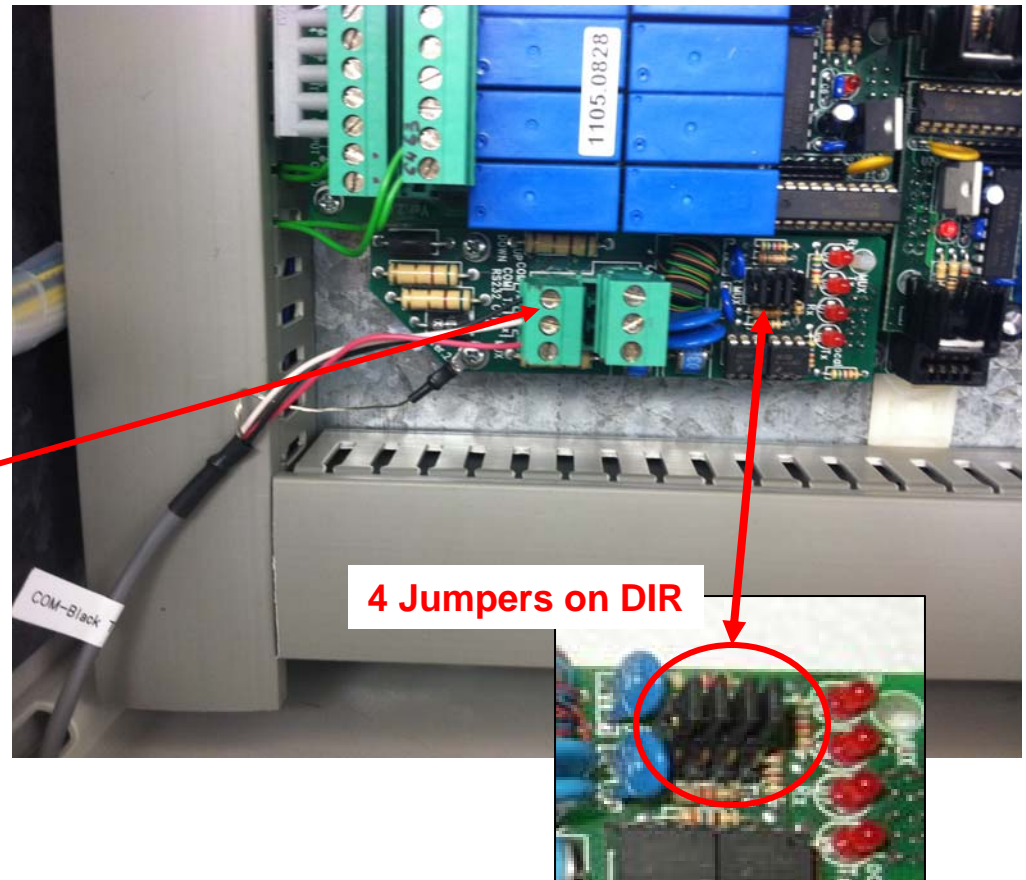


NETAFIM ICU CELLULAR MODEM

Connections between the ICU Cellular Modem and the NMC Controllers

NMC Pro or NMC DC Controller

1. The Communication card RS232 needs to be installed in the NMC Controller
2. Verify that the 4 Jumpers are on DIR position (upper and middle pin)
3. Connect the 3 Wires from the Netafim Direct connector to the lower plug
 - Black to Com
 - White to TX
 - Red to RX

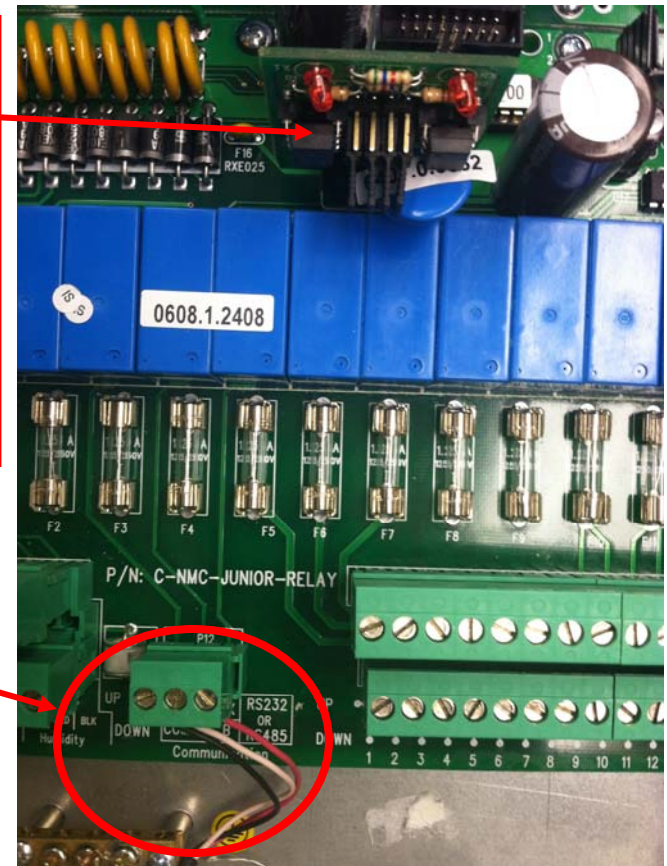
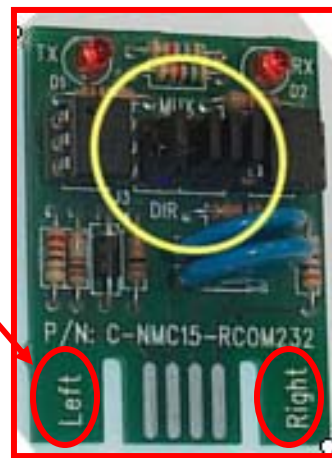


NETAFIM ICU CELLULAR MODEM

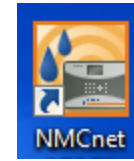
Connections between the ICU Cellular Modem and the NMC Controllers

NMC Jr. Controller

1. The Communication card RS232 needs to be installed in the NMC Controller. Note the Left-Right direction on the card.
2. Verify that the 4 Jumpers are on DIR position (lower and middle pin)
3. Connect the 3 Wires from the Netafim Direct connector
 - Black to Com
 - White to TX
 - Red to RX



NMCNET PC SOFTWARE



The PC will need to run the NMCNet PC Software to communicate and interact with the NMC Controller.

See the NMCNet User Manual for instructions on NMCNet installation.

For Technical assistance please call your local Netafim Dealer