

# INSTALLATION MANUAL

Settings for GaliNet - Galileo Controller with RadioNet Host

## RadioNet



# RadioNet

## ***Connections and Settings for GaliNet – Galileo controller with RadioNet Host***

This data sheet covers the connection and settings for the GaliNet or Galileo Controllers and the RadioNet Host.

This is a supplement to the RadioNet Installation Manual.

**NOTE:** For complete information on the RadioNet system, overview, safety, installation and settings, we recommend reviewing the RadioNet Installation Manual prior to using this supplemental manual.

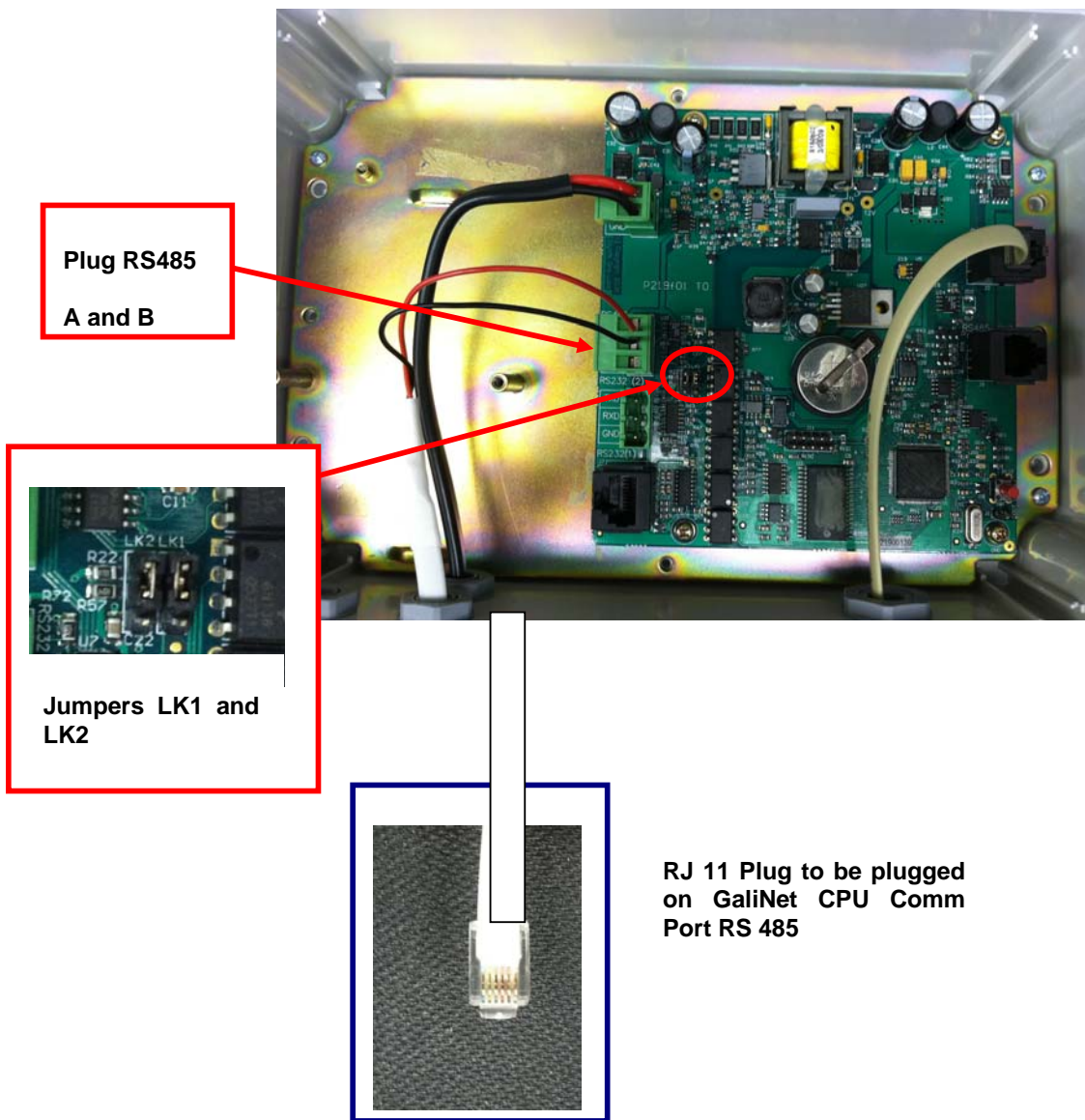
For additional information, please contact a Netafim USA Certified Dealer.

# RadioNet

## Connection - Host Unit to Control RS485

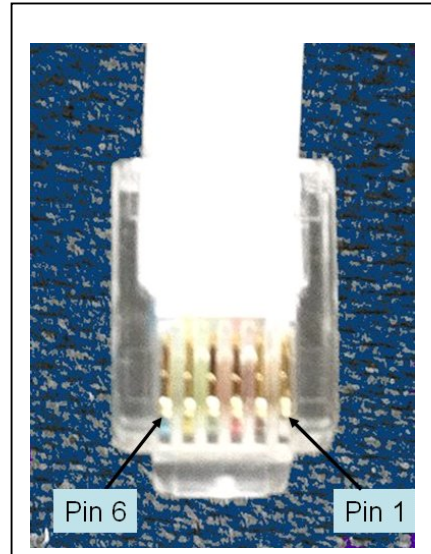
Communication to the GaliNet (Galileo) Controller and the Host is by a proprietary RS485 serial format.

- The RJ11 communication cable is connected between the GaliNet and the Host.
- The Jumpers LK2 and LK1 must in the UP position linking the center and top pins.
- The GaliNet controller needs to have the same input/output cards types that will be defined on the Host
- Connection of wires:

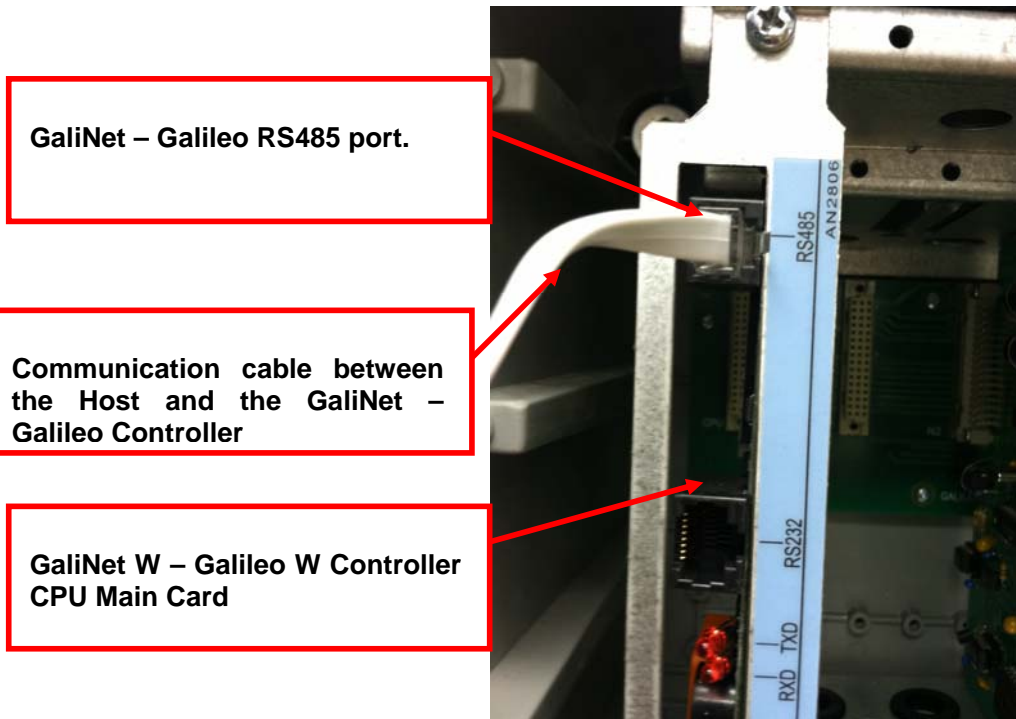


# RadioNet

## Specifications for RS485 Communication Cable between the RadioNet Host and GaliNet Controller (Galileo)



### Connection to GaliNet W Controller



# RadioNet

## Settings for the Input and Output cards on the GaliNet Controller (Galileo)

The host will function with the GaliNet - Galileo controller like a virtual expansion box.

The Virtual expansion box will have the input and outputs card that will be used to control the RadioNet RTU outputs or/and inputs.

The card types that can be defined on the GaliNet – Galileo controller are:

8/16 In/Out : 8 Digital inputs and 16 Outputs.

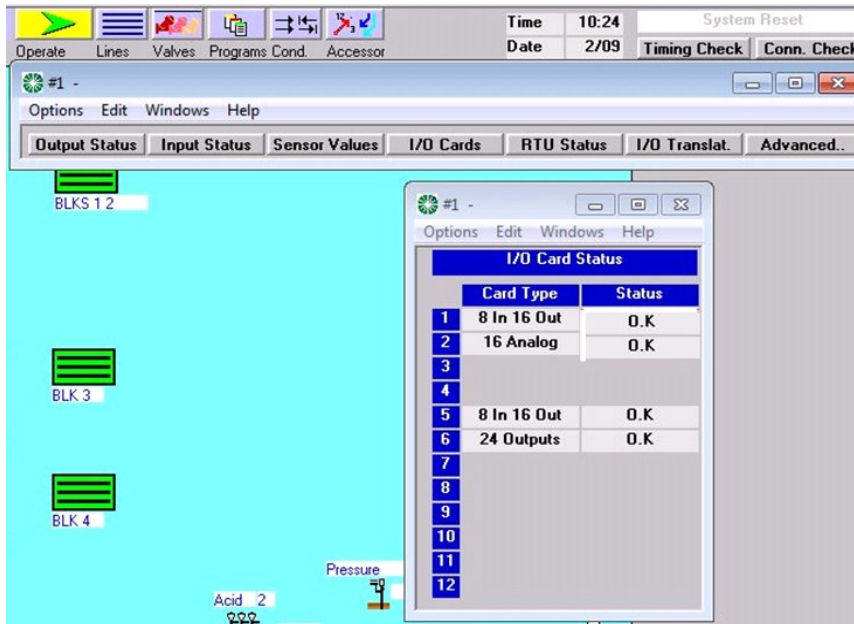
24 Out: 24 Outputs.

- Define on the GaliNet – Galileo controller the cards that will be necessary for the number of Inputs and Outputs that will be used for the remote outputs and inputs.

Notes:

- The Communication Status will be “O.K.” after the settings on the Host are complete.
- The card setting with the GaliNet 16 or 32 will be different than the GaliNet W.

The first card will be “Midi” and the second card will be the first card of the Virtual expansion box, in this case card #2 will be 8 In 16 Out and the card #3 will be 24 Outputs.



# RadioNet

## Host Card Settings

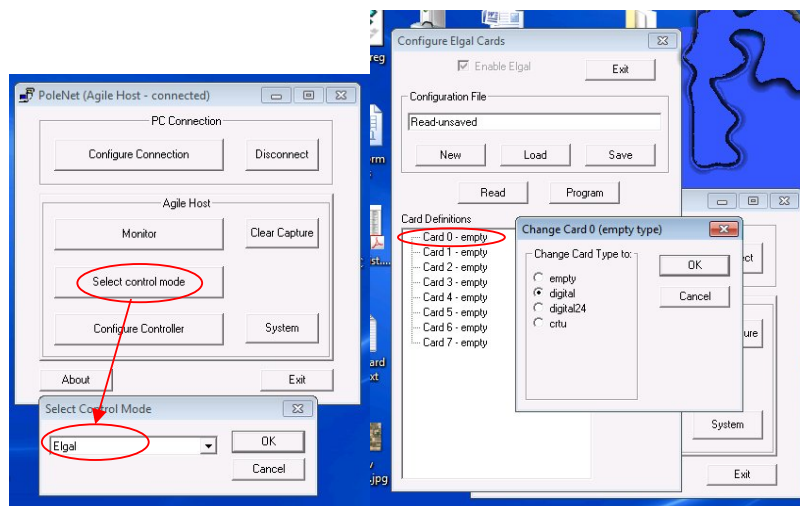
- On the Host (PoleNet PC Program) go to “Select control mode” and select “Elgal”, this will be the selection for all the GaliNet – Galileo Controllers.
- Go to Monitor, check that all the units are on the network and “Capture” the network according the instructions in the RadioNet Installation Manual.
- Go to Configure Controller, the Configure Elgal Cards configures up to 8 cards, from 0 to 7.
- For the Galileo controller, this will be the cards on the expansion box, but in reality they will be virtual cards.
- Card definition: right clicking on the mouse at Card 0, will open a new box and virtual card should be selected. The same for other cards that need to be defined.

empty: no card is defined.

digital: 8 input and 16 output card

digital 24: 24 Output card

crtu: not in use with RadioNet.



- When the cards are defined, the “Mapping” box need to be selected.
- This screen has the [link](#) for assigning the Controller outputs and the RadioNet RTU outputs.
- Choose the output or Input number from the virtual card that was already defined. Choose the RadioNet unit with the output number and move it to the right box.
- When the outputs and inputs assignment is complete, click on “Program” to send the settings to the Host.
- Click on the “Save” box to save the settings on the computer.

