

Repeater Configuration Software V.1.07

Table of content

General description.....	2
Main features.....	2
Software installation.....	3
Getting started.....	4
Comm. Settings.....	5
Downloading the Repeater settings to the PC.....	6
Configuring the Repeater.....	8
Delay configuration.....	8
List mode configuration.....	9

General description:

The repeater configuration software main use is to reduce and control the radio traffic for each repeater.

Main features:

Delay in transmission configuration.

There is three methods of relaying:

1. Open: meaning the repeater will relay all the radio traffic.
2. List: only the specified repeater/transmitters will be relayed.
3. Negative: only the specified repeater/transmitters will not be relayed.

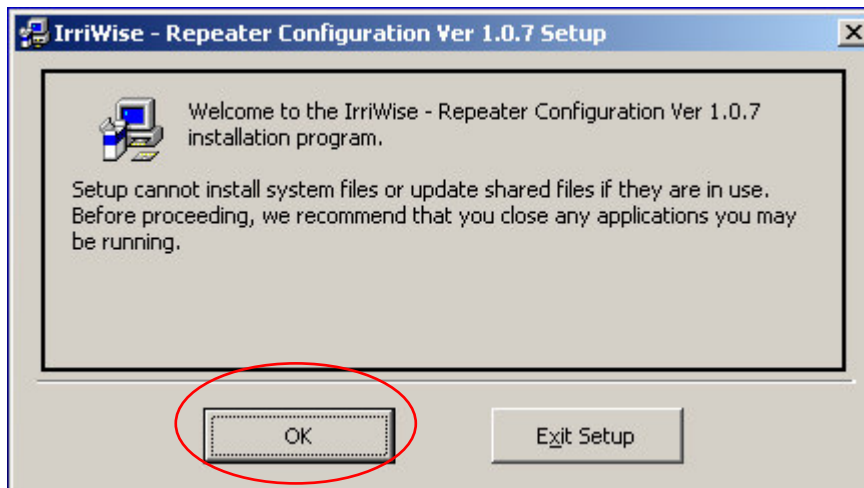
Software installation

-Unzip the file.

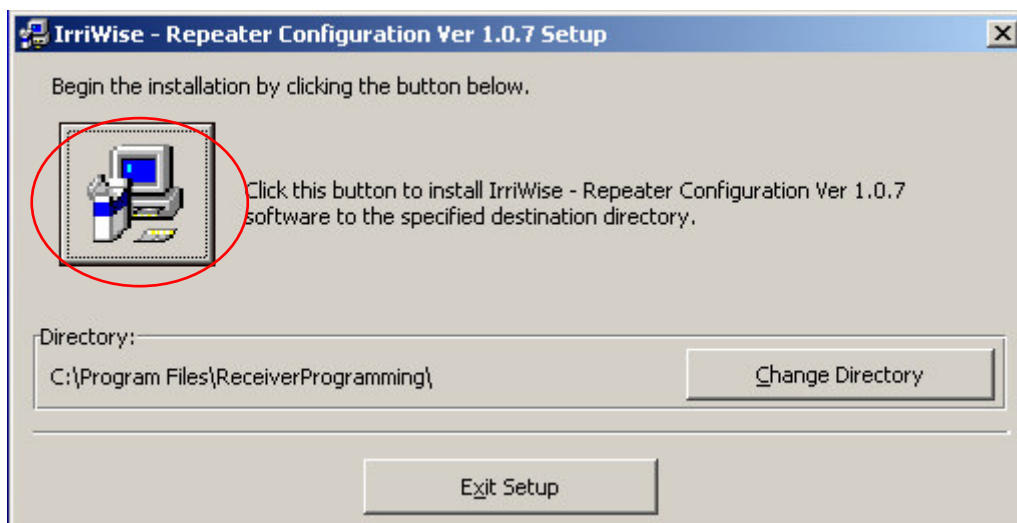
-run the Setup.exe file

-Follow the instructions:

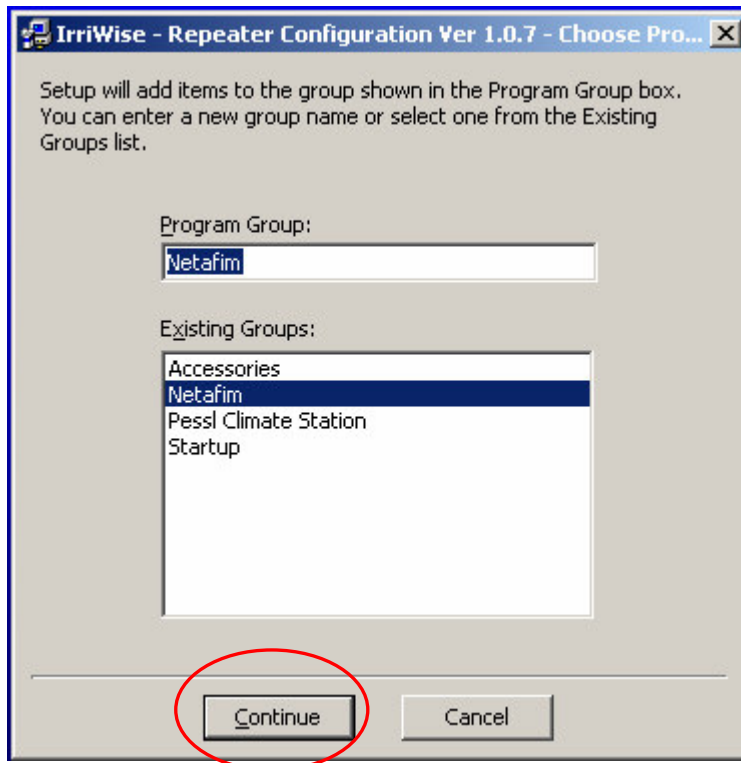
1. Click O.K



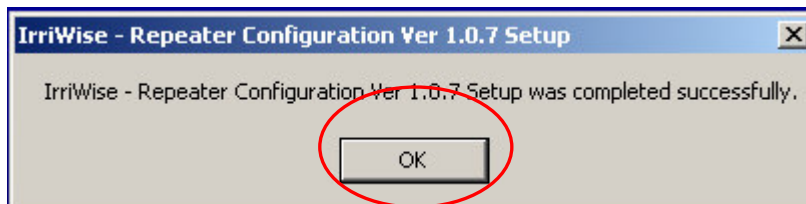
2. Click the icon



3. Choose a group and press Continue



4. Installation completed! – press O.K



-Remark:

For desktop shortcut go to C:\Program Files\ReceiverProgramming and do copy – paste to the "RepeaterConfiguration.exe" file to the desktop.

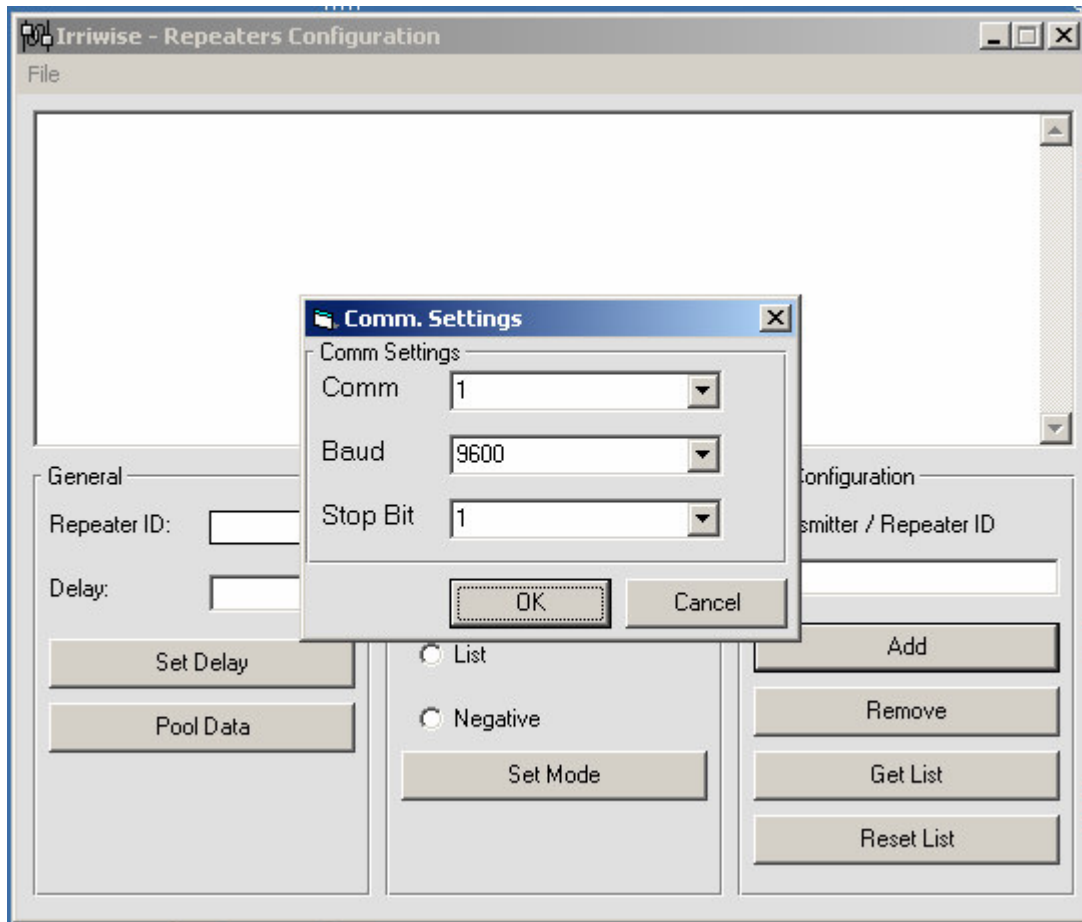
Getting started

For running the software double click the repeater configuration icon.

Comm. Settings

The repeater is equipped with a DB9 plug which connected to the serial com port on your PC.

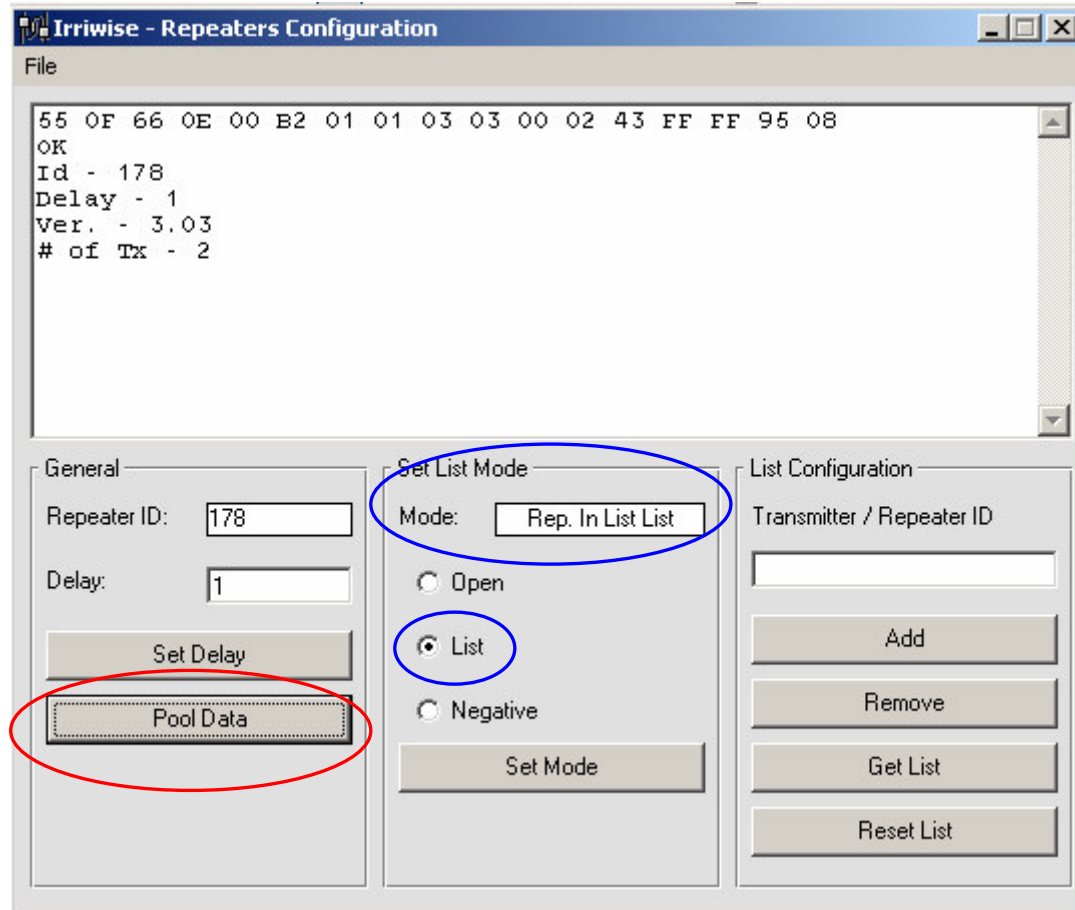
For changing the communication settings go to File \rightarrow Comm. Settings



The baud rate and the stop bit setting should not be changed!

Downloading the Repeater settings to the PC

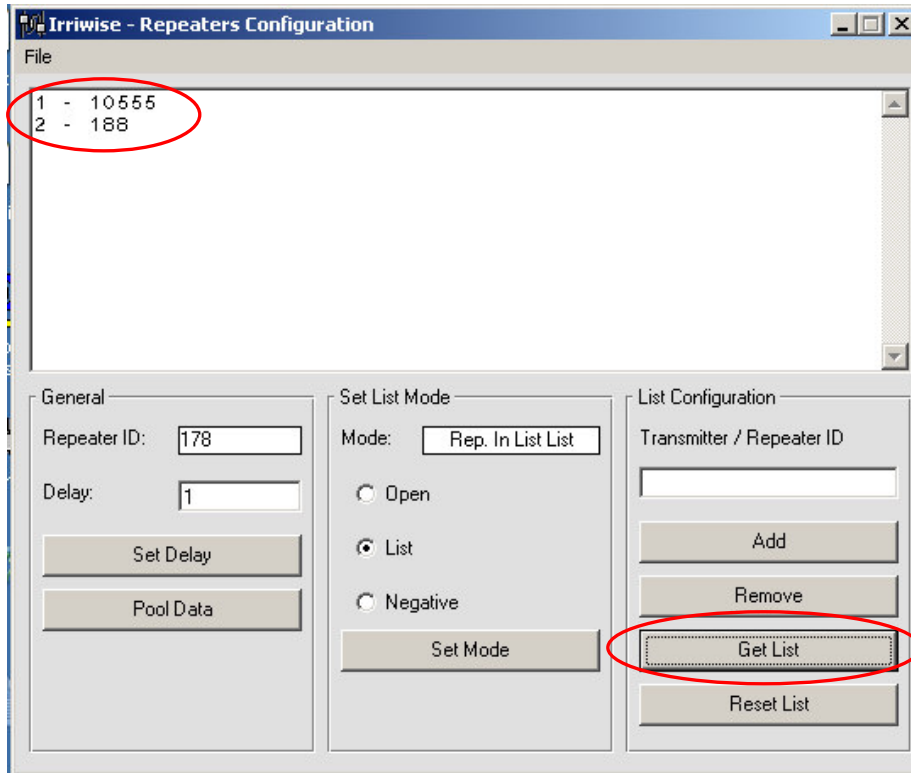
For viewing the repeater configuration press the "Pool data" button



The data displayed is for the repeater Id, the delay (in second) and the firmware version.

You can also see the "Set List Mode" according to the line written next to the "Mode:"

For viewing the Transmitters/repeaters that in the list press the "Get List" button, and you will see the Id of the Transmitters/repeaters that in the list.



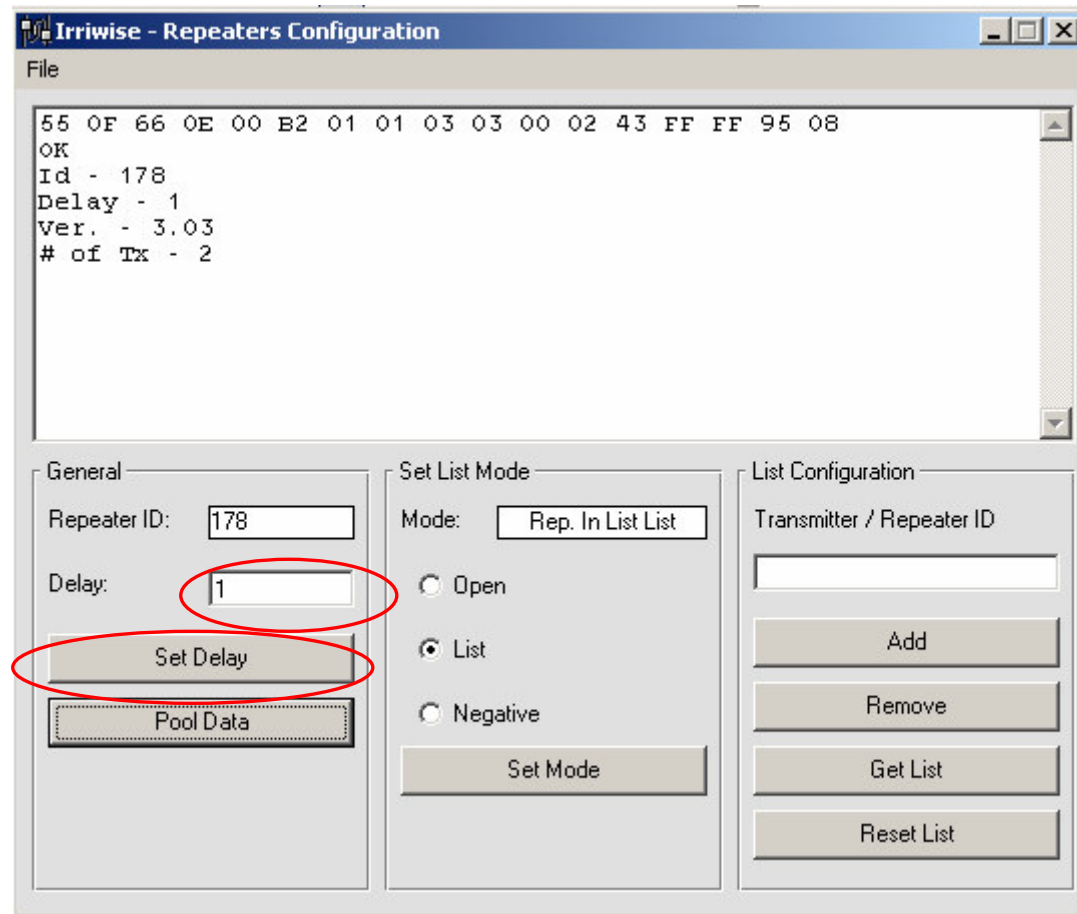
Configuring the Repeater

Delay configuration

If you have a network of several repeaters you can set different delay in transmission for each repeater.

For one repeater the advised delay is 1sec.

For changing the delay, enter a new value and press the "set delay" button.



List mode configuration

-For open mode choose the "Open" option and press the "Set Mode" button.

-For list mode choose "List" option and press the "Set Mode" button.

Now on the "Transmitter/Repeater" enter the Id one by one, by pressing the "Add" button.

The same action should be executed for removing an id from the list by pressing the "Remove" button.

-For Negative mode do the same as in List Mode but choose the Negative option.

